

The authors are requested to prepare their manuscripts as per the instructions/specifications given below. It should be noted that the review process is solely depend upon the significance of the work and the care used by authors to represent it, in the form of their manuscripts. Therefore, authors are strongly encouraged to use **THIS FILE** carefully before preparing / submitting their manuscript for publication.

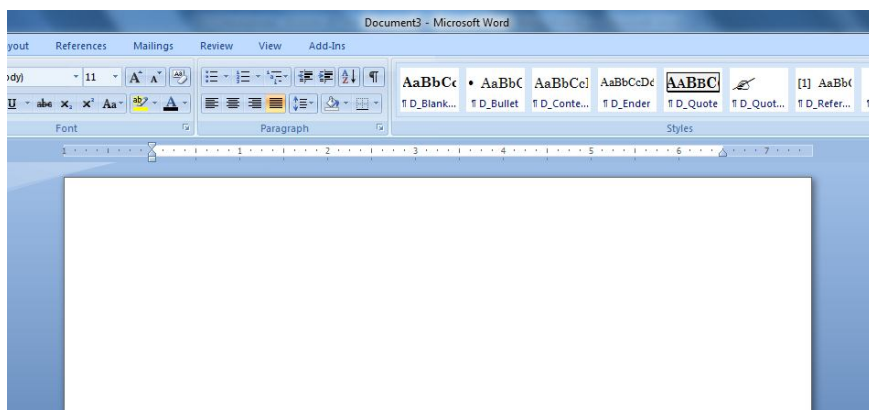
## **GUIDELINES FOR TYPESETTING MANUSCRIPTS USING MSWORD NOT MORE THAN 6 A4 SIZE PAGE**

FORMATTING DESCRIPTION ARE GIVEN ON BELOW OF EACH MATTER, YOU CAN ALSO DOWNLOAD THE MSWORD TEMPLATE which already have STYLES include in it. Click on below to download the ms-word template:

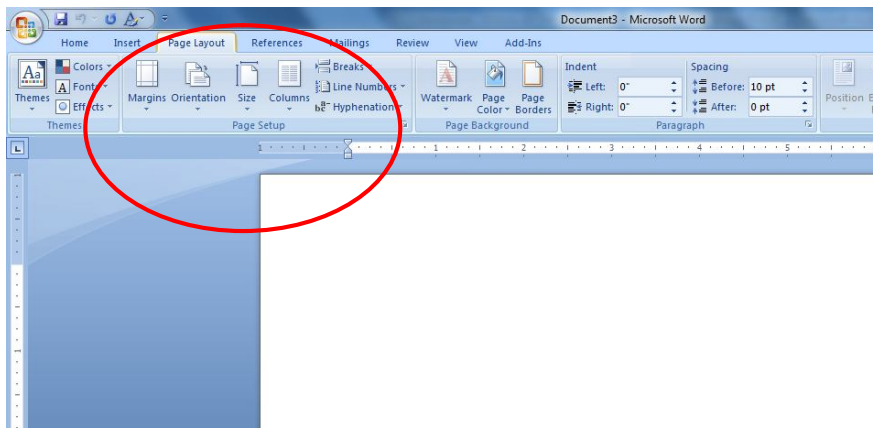
[http://www.vsrjournals.com/docs/Journal\\_Guidelines\\_For\\_Manuscript.doc](http://www.vsrjournals.com/docs/Journal_Guidelines_For_Manuscript.doc)

## **PAGE SETTING**

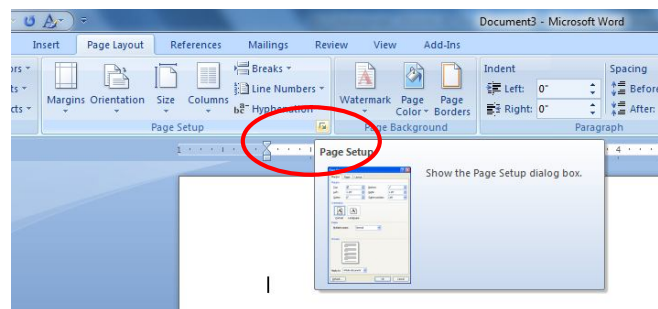
### **Step 1: Open the MS-WORD**



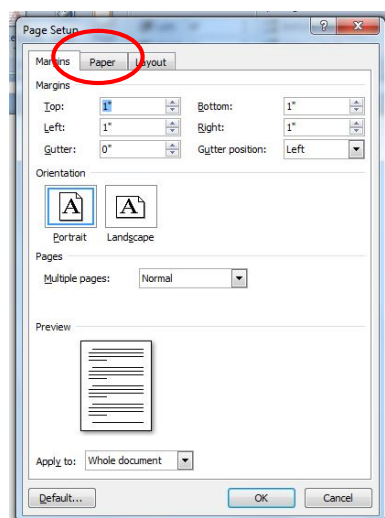
## Step 2: Select Page Layout Option



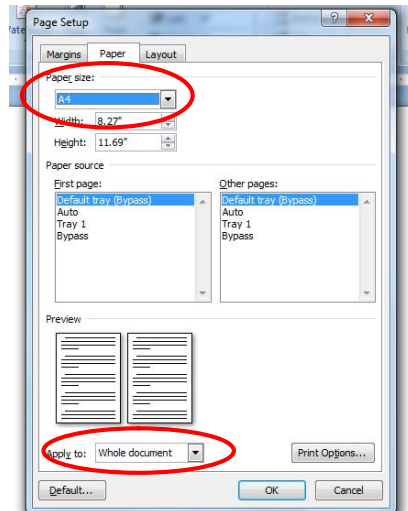
## Step 3: Click here to open the Page Setup



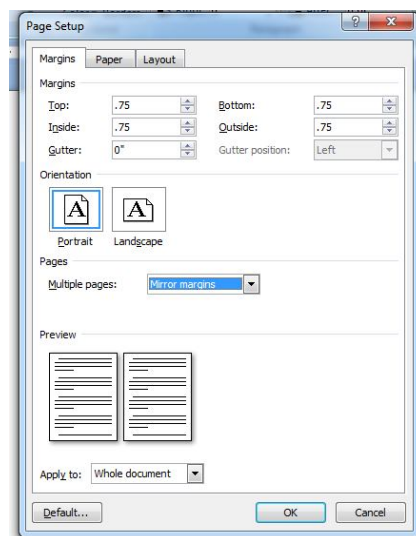
## Step 4: After clicking Page Setup dialogue box is opened.



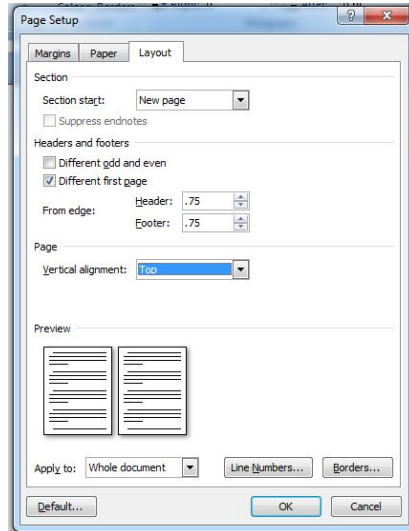
## Step 5: Click on the Paper Option and Select Page Size A4 and Apply to Whole Document



## Step 6: Set the Margins, Orientation, Pages and Apply to as display in fig.

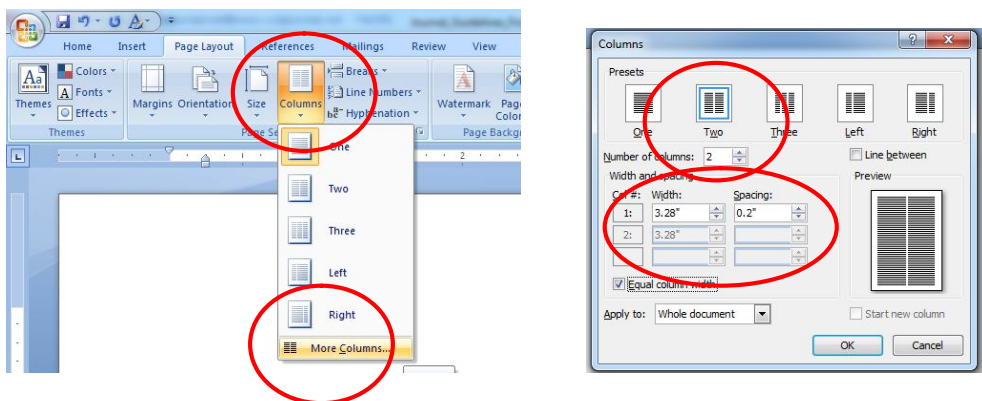


### Step 7: Select Layout Out and set the Section Start, Headers & Footers and Apply to as display in fig.



### Step 8: At last click on OK button and start typing your Book Matter.

## FOR TWO COLUMNS



---

# PAGE FORMATTING

## CATEGORY : RESEARCH PAPER/ REVIEW PAPER

Font (Cambria), Size (12), Face (Bold), Alignment (Left), Effects (All Caps), Spacing (Before: 24 Pts), Line Spacing (Single)

## PAPER TITLE

Font (Century Gothic), Size (16), Face (Bold), Alignment (Center), Effects (All Caps), Spacing (Before: 0 Pts), Line Spacing (Single)

*or use STYLES : J\_Heading*

### <sup>1</sup>First Author\* and <sup>2</sup>Second Author

Font (Century Gothic), Size (10), Face (Bold), Alignment (Center), Effects (None), Spacing (Before: 0 Pts), Line Spacing (Single)

*or use STYLES : J\_Author*

<sup>1</sup>Designation, Department, Institution, City, State, Country.

<sup>2</sup>Designation, Department, Institution, City, State, Country.

\*Corresponding Author : Email id of Corresponding Author

Font (Century Gothic), Size (10), Face (Regular), Alignment (Center), Effects (None), Spacing (Before: 10 Pts), Line Spacing (Single)

*or use STYLES : J\_Author*

## ABSTRACT

Font (Century Gothic), Size (12), Face (Bold), Alignment (Center), Effects (All Caps), Spacing (Before: 18 Pts), Line Spacing (Single)

*or use STYLES : J\_Sub\_Head*

Abstract Text Type Here not more than 2 or 3 paragraphs.

Font (Times New Roman), Size (9), Face (Regular), Alignment (Justify), Effects (None), Spacing (Before: 10 Pts), Line Spacing (Single)

*or use STYLES : J\_Abstract*

*Keywords : Keywords related with paper*

Font (Times New Roman), Size (9), Face (Bold Italic), Alignment (Justify), Effects (None), Spacing (Before: 10 Pts), Line Spacing (Single)

*or use STYLES : J\_Abstract*

### 1. INTRODUCTION

Font (Verdana), Size (10), Face (Bold), Alignment (Justify), Effects (All Caps), Spacing (Before: 0 Pts), Line Spacing (Single) with BULLET NUMBER  
 or use **STYLES : J\_Sub\_Head\_Bullet**

Type Here : Introduction Matter (First Paragraph)  
 Font (Times New Roman), Size (10), Face (Regular), Alignment (Justify), Effects (), Spacing (Before: 0 Pts), Line Spacing (Single)  
 or use **STYLES : J\_Content\_No\_Space**

Type Here : Introduction Matter (Next and rest Paragraph)  
 Font (Times New Roman), Size (10), Face (Regular), Alignment (Justify), Effects (), Spacing (Before: 10 Pts), Line Spacing (Single)  
 or use **STYLES : J\_Content**

### 2. OBJECTIVE

Same as INTRODUCTION style

Type Here : Objective Matter (First Paragraph)  
 Same as INTRODUCTION First Paragraph style

Type Here : Objective Matter (Next and rest Paragraph)  
 Same as INTRODUCTION Next and Rest Paragraph style

### 3. RESERCH METHODOLOGY

Same as INTRODUCTION style

Type Here : Research Methodology Matter (First Paragraph)  
 Same as INTRODUCTION First Paragraph style

Type Here : Research Methodology Matter (Next and rest Paragraph)  
 Same as INTRODUCTION Next and Rest Paragraph style

**Table 1 : Table Heading**

Font (Times New Roman), Size (10), Face (Bold), Alignment (Center), Effects (), Spacing (Before: 10 Pts), Line Spacing (Single)  
 or use **STYLES : J\_Fig**

<b>Heading 1</b>	<b>Heading 2</b>
Matter	Matter

Matter	Matter
Matter	Matter
Matter	Matter

Same as INTRODUCTION Next and Rest Paragraph style

### 4. DATA ANALYSIS

Same as INTRODUCTION style

Type Here : Data Analysis Matter (First Paragraph)  
 Same as INTRODUCTION First Paragraph style

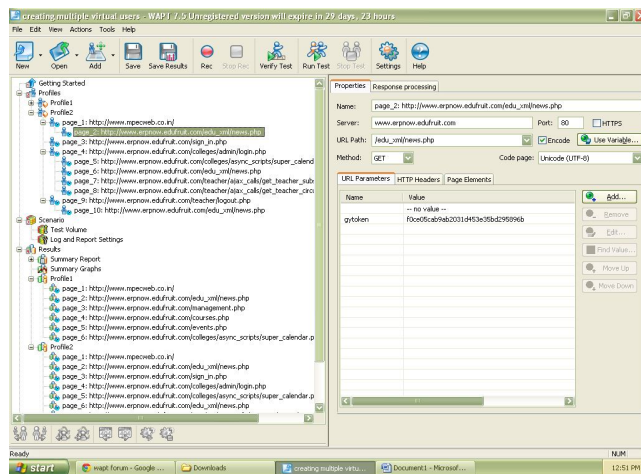
Type Here : Data Analysis Matter (Next and rest Paragraph)  
 Same as INTRODUCTION Next and Rest Paragraph style

### 5. RESULTS

Same as INTRODUCTION style

Type Here : Results Matter (First Paragraph)  
 Same as INTRODUCTION First Paragraph style

Type Here : Results Matter (Next and rest Paragraph)  
 Same as INTRODUCTION Next and Rest Paragraph style



**Fig. 1 : Figure Heading**

Same as Table Heading Style

### 6. ACKNOWLEDGEMENT

Same as INTRODUCTION style

Type Here : Acknowledgement Matter (First Paragraph)  
 Same as INTRODUCTION First Paragraph style

---

Type Here : Acknowledgement Matter (Next and rest Paragraph)

Same as INTRODUCTION Next and Rest Paragraph style

## 7. CONCLUSION

Same as INTRODUCTION style

Type Here : Conclusion Matter (First Paragraph)

Same as INTRODUCTION First Paragraph style

Type Here : Conclusion Matter (Next and rest Paragraph)

Same as INTRODUCTION Next and Rest Paragraph style

## 8. REFERENCES

Same as INTRODUCTION style

- [1] N. Koochakzadeh, V. Garousi, A Tester-Assisted Methodology for Test Redundancy Detection, Advances in Software Engineering, Hindawi Publishing Corporation, V 2010, Article ID 932686, 2009, URL: <http://www.hindawi.com/journals/ase/2010/932686>

Font (Times New Roman), Size (9), Face (Bold), Alignment (Justify), Effects (), Spacing (Before: 0 Pts), Line Spacing (Single) with BULLET NUMBER  
*or use STYLES : J\_Reference*



Font (Wingdings), Size (10), Face (Regular), Alignment (Right), Effects (), Spacing (Before: 0 Pts), Line Spacing (Single)  
*or use STYLES : J\_Ender*